

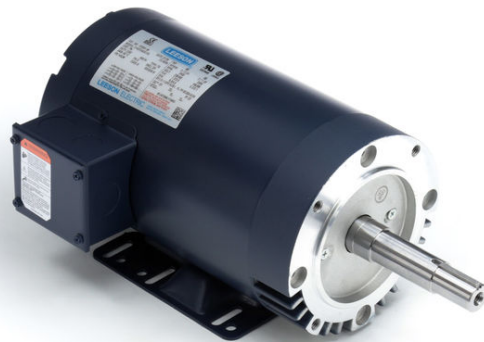
PRODUCT INFORMATION PACKET



Model No: C143T34DC6A

Catalog No: 122075.00

..1 1/2HP..3600RPM.143JMV.DP.230/460V.3PH.60HZ.CONT.40C..C-FACE.....
JM



Regal and Leeson are trademarks of Regal Beloit Corporation or one of its affiliated companies.

©2018 Regal Beloit Corporation, All Rights Reserved. MC017097E





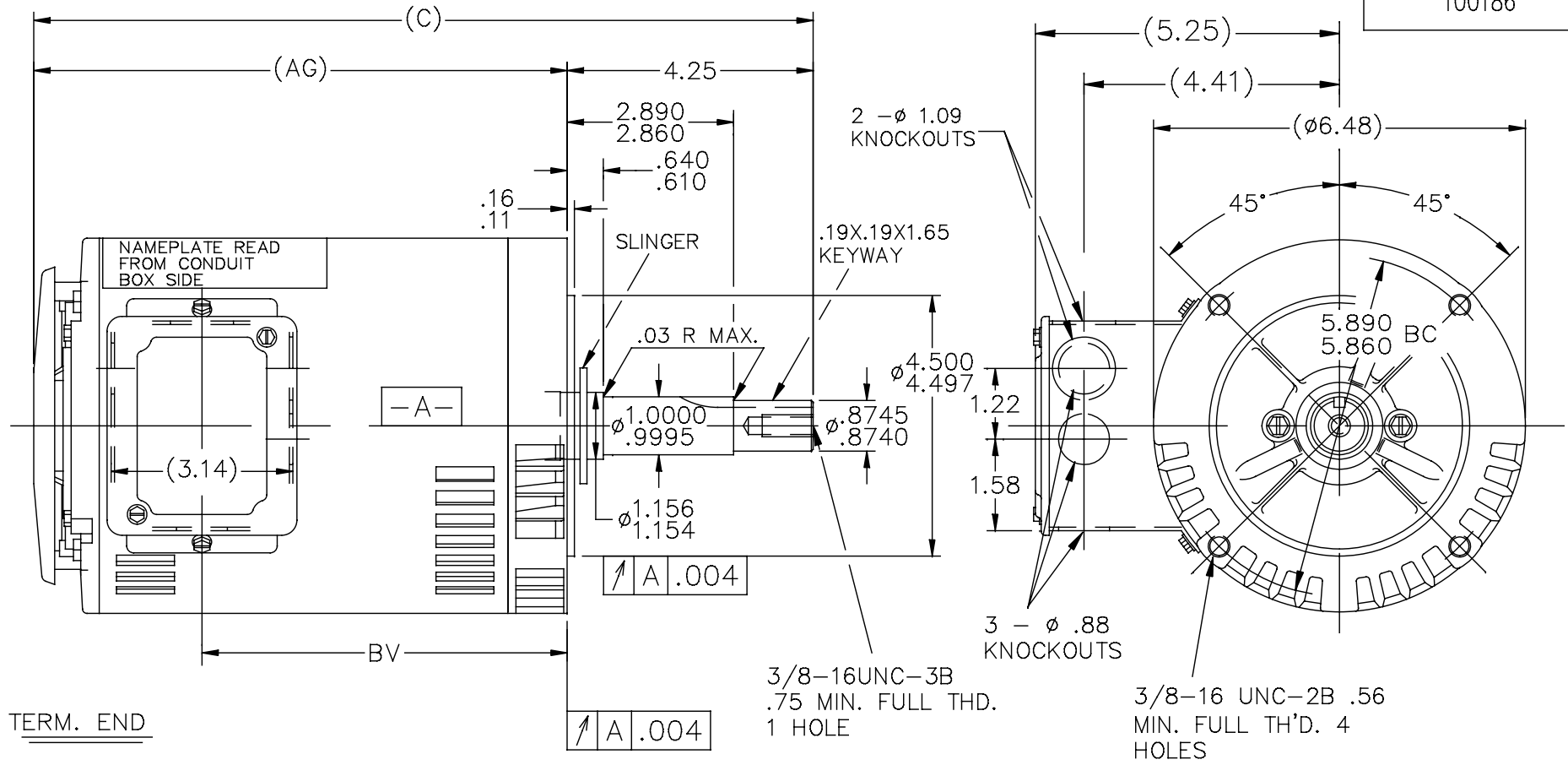
Nameplate Specifications

Output HP	1.50 Hp	Output KW	1.1 kW
Frequency	60 Hz	Voltage	230/460 V
Current	3.8/1.9 A	Speed	3515 rpm
Service Factor	1.15	Phase	3
Efficiency	86.5 %	Duty	Continuous
Insulation Class	F	Design Code	B
KVA Code	L	Frame	143JMV
Enclosure	Drip Proof	Overload Protector	No
Ambient Temperature	40 °C	Drive End Bearing Size	6206
Opp Drive End Bearing Size	6203	UL	Recognized
CSA	Y	CE	Y
IP Code	22		

Technical Specifications

Electrical Type	Squirrel Cage Inverter Rated	Starting Method	Line Or Inverter
Poles	2	Rotation	Reversible
Mounting	Round	Motor Orientation	HORIZONTAL OR SHAFT DOWN
Drive End Bearing	BALL	Opp Drive End Bearing	BALL
Frame Material	Rolled Steel	Shaft Type	JM
Overall Length	14.92 in	Frame Length	8.56 in
Shaft Diameter	0.875 in	Shaft Extension	4.28 in
Assembly/Box Mounting	F1 ONLY		
Outline Drawing	A-100186-856	Connection Diagram	A-EE7308-LE

100186



DASH	FRAME	C	AG	BV	DASH	FRAME	C	AG	BV
					806	140	14.42	10.17	7.31
656	140	12.92	8.67	5.81	856	"	14.92	10.67	7.81
706	140	13.42	9.17	6.31	906	"	15.42	11.17	8.31
756	140	13.92	9.67	6.81	956	"	15.92	11.67	8.81

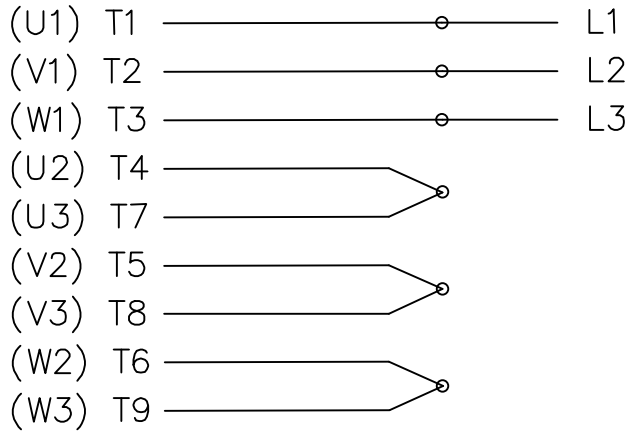
NOTE: CONDUIT BOX CAN BE ROTATED 180°

NO.	REVISION	BY & DATE	CHK	ANG	FINISH	TOLERANCES UNLESS SPECIFIED		DRAWN SMC 10-30-1990			
						DEC.	INCHES				
6	UPDATED TO REGAL LOGO	SAJ 07-06-2015	VS					CHK ML 10-31-1990			
5	REVISED AK DIA ECR-0044440	SVL 11-06-2013		.X	±.1			APPD			
4	REDRAWN IN AUTOCAD	TAT 07-06-2004	ML	.XX	±.03	TITLE OUTLINE		SCALE 3=8			
3	.75 FULL THD. WAS .88	CN 13229 RM 04-26-1991		.XXX	±.005	140T FR.-BB-DR.PR-C FACE-3Ø-JM. EXT.		REF			
2	REDRAWN ON CADD	SMC 10-30-1990		.XXXX	±.0005	MAT'L.		FMF			
								PREV			
THIS DRAWING IN DESIGN AND DETAIL IS OUR PROPERTY AND MUST NOT BE USED EXCEPT IN CONNECTION WITH OUR WORK ALL RIGHTS OF DESIGN AND INVENTION ARE RESERVED THIS IS AN ELECTRONICALLY GENERATED DOCUMENT - DO NOT SCALE THIS PRINT						RFP	CAD FILE 100186	SIZE A	DRAWING NO. 100186	PAGE OF	REV. 6
						DIST WP					

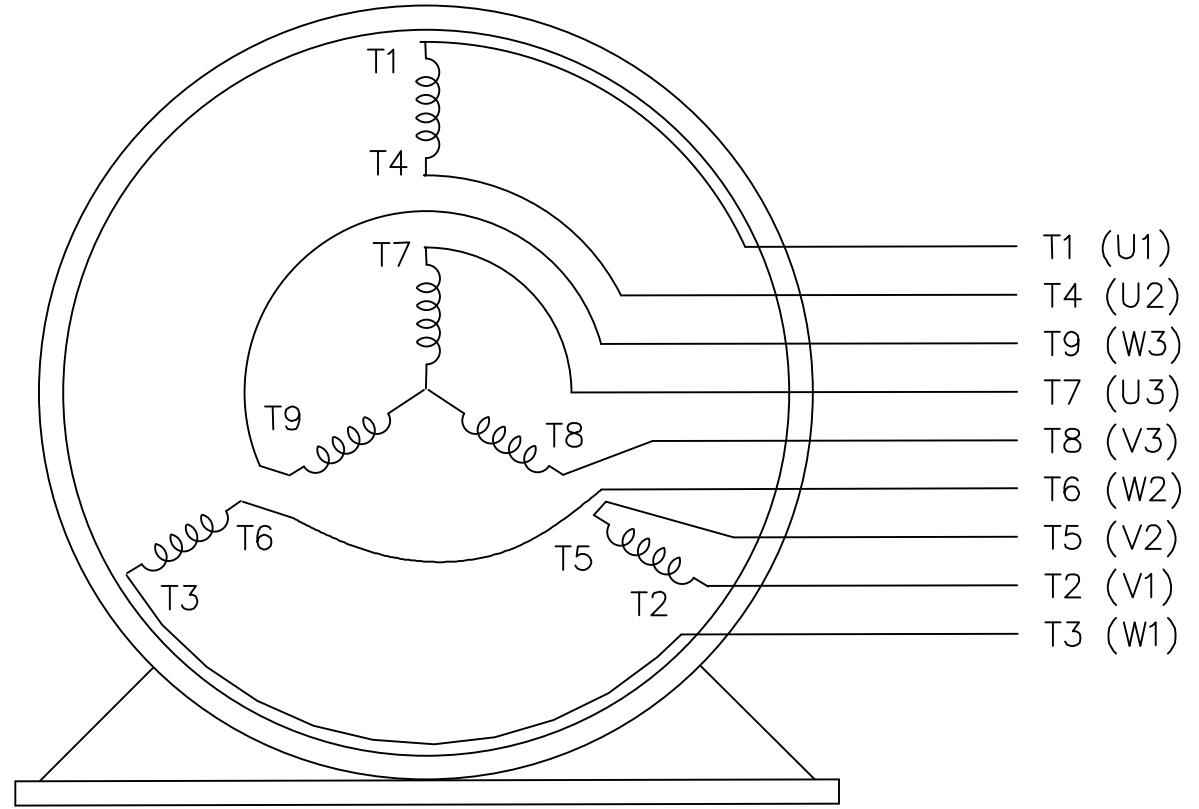
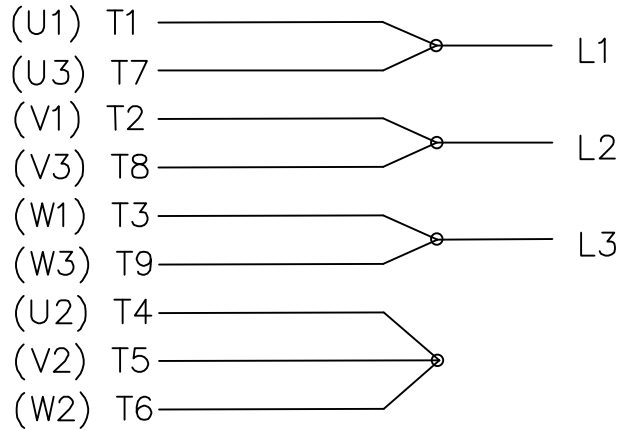


THREE PHASE
DUAL VOLTAGE MOTOR

HIGH VOLTAGE



LOW VOLTAGE




- T1 (U1)
- T4 (U2)
- T9 (W3)
- T7 (U3)
- T8 (V3)
- T6 (W2)
- T5 (V2)
- T2 (V1)
- T3 (W1)

VIEW OF TERMINAL END

REF.
WINDING DIAGRAM

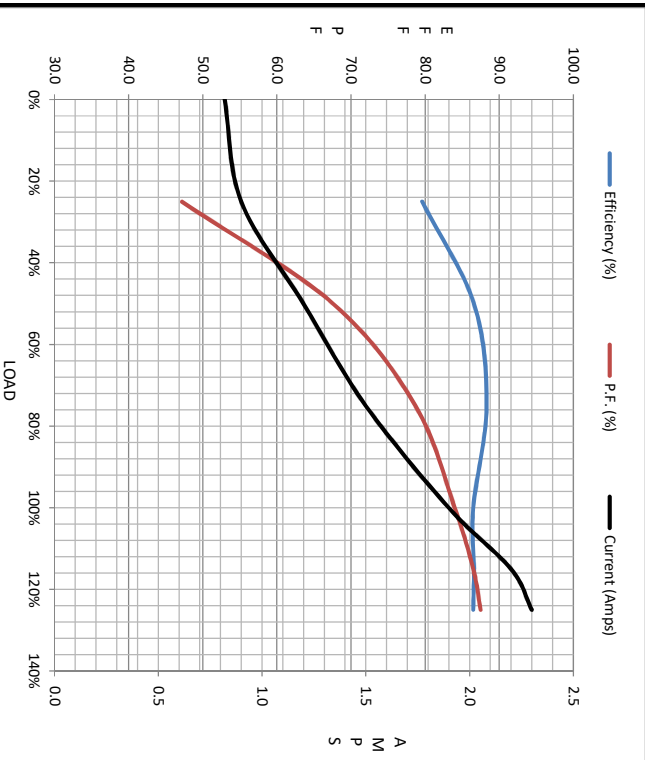
T8Y, T2Y, T2BL, T4BX, T2EC, T2G
T6BZ, T2B, T6BL, T4AV, T6B, T4B

				TOLERANCES UNLESS SPECIFIED			ELECTRIC MOTORS GEARMOTORS AND DRIVES	DRAWN HLB 04-29-2002		
				DEC.	INCHES			CHK ML 05-03-2002		
				.X	±.1			APPD GK 05-03-2002		
				.XX	±.01			SCALE 1=1		
2	ADDED IEC NOTATIONS... (U1), (V1) ETC. (MU105786)	REP 01-11-2012	DR	.XXX	±.005	TITLE CONNECTION DIAGRAM 3Ø - DUAL VOLTAGE MOTOR		REF		
1	NEW DRAWING	HLB 05-03-2002	ML	.XXXX	±.0005	MAT'L.		FMF		
NO.	REVISION	BY & DATE	CHK	ANG	±1/2'	FINISH		PREV		
THIS DRAWING IN DESIGN AND DETAIL IS OUR PROPERTY AND MUST NOT BE USED EXCEPT IN CONNECTION WITH OUR WORK ALL RIGHTS OF DESIGN AND INVENTION ARE RESERVED THIS IS AN ELECTRONICALLY GENERATED DOCUMENT - DO NOT SCALE THIS PRINT				RFP	CAD FILE EE7308-LE		SIZE	DRAWING NO.	PAGE OF	REV.
				DIST LB-WP			A	EE7308-LE		2



Motor Load Data								
Load	0%	25%	50%	75%	100%	115%	125%	LR
Current (Amps)	0.82	0.90	1.20	1.50	1.90	2.20	2.30	18.6
Torque (ft-lb)	0.00	0.55	1.10	1.68	2.25	2.60	2.80	6.8
RPM	3600	3580	3560	3540	3515	3505	3495	0
Efficiency (%)		79.6	86.6	88.3	86.5	86.5	86.5	
P.F. (%)	14.3	47.2	67.6	78.7	84.0	86.5	87.5	62.5

Motor Speed Data						Information Block																					
Speed (RPM)	LR	Pull-Up	BD	Rated	Idle	HP	Sync. RPM	Frame	Enclosure	Construction	Voltage	Frequency	Design	LR Code letter	Service Factor	Temp Rise @ FL	Duty	Ambient	Elevation	Rotor/Shaft wk ²	Ref Wdg	Sound Pressure @ 1M	VFD Rating	Outline Dwg	Conn. Diag	Additional Specifications:	
0		215	2700	3515	3600	1.5	3600	143	DP	TDR	230/460#190/380	60	A	L	1.15	20	CONT	40 °C	1,000 feet	0.00	Z12168 DR	68	CONSTANT 2:1	A-100186-856	A-EE7308-1E		
Current (Amps)	18.6	18.7	11.7	1.90	0.82																						
Torque (ft-lb)	6.8	5.7	10.0	2.25	0.00																						



EQUIV CKT (OHMS / PHASE)			
R1	R2	X1	Xm
5.2950	3.7820	9.2650	9.4550
			359.2900

